

## **INTRODUCTION**

The Emulator III Remote Controller/Librarian program allows you to *completely* control one or more EIII's from your Macintosh computer. The remote controller may be operated entirely using the Mac keyboard or by using the pull down windows on the Macintosh screen. You choose the method that works best for you. Sample and preset names may be simply typed in from the Mac keyboard. Sounds can be played using the on-screen MIDI keyboard (complete with wheels) or directly from the Macintosh keys.

Using commonly available "Macro" programs such as Macro Maker™ or Quick Keys™, loading or any other complex series of functions can be fully automated.

The EIII and Macintosh communicate through the MIDI interface so that a valuable SCSI ID number is not wasted. The built-in merge function lets you use an external keyboard while the EIII and Mac are connected.

The second part of the program is the EIII librarian. The librarian keeps track of your entire EIII library, including removable media. You can quickly browse or search your entire disk library for the desired bank, preset or sample. Items can then be loaded or merged into the EIII bank and the process repeated if desired. Samples can be auditioned directly off the hard disk before actually loading them, saving valuable time. The contents of your library can of course, be printed out for hardcopy reference.



## **GETTING STARTED**

This manual is written with the assumption that you have a basic understanding of Macintosh computer operation. If you are not familiar with the operation of the Macintosh, please take the time to learn the basic Macintosh techniques before continuing.

**Please spend a minute right now to fill out and send in your Warranty Card!**

**Thank-You.**

**The Box Contains:**

- This operation manual
- 1.31 software disk for the EIIIX
- EIIIX Remote Controller/Librarian program for the Macintosh

**To use the Remote Controller you will need:**

- Macintosh, any model except 128K.
- Macintosh MIDI interface
- Macintosh System 4.2 or greater.

**UPDATE YOUR EMULATOR SOFTWARE**

- Use the Copy Software function (Master/Globals, Disk Utilities, 4) to copy the 1.30 software onto your EIIIX's hard disk. This is necessary for proper operation.
- Switch off the EIIIX and re-boot. Store the 1.30 software disk in a safe place.

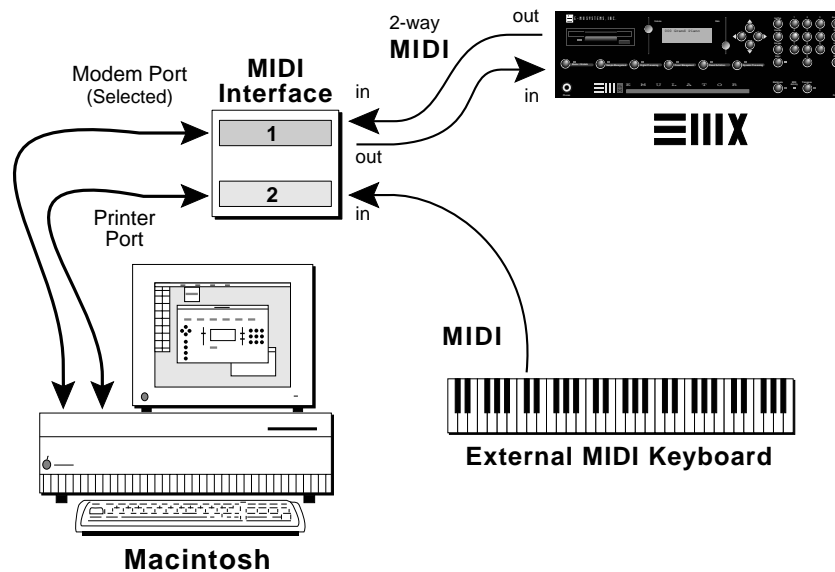
## SETUP

### No Copy Protection

The EIIIIX Remote Controller is *not* copy protected and may be installed on your Macintosh hard disk by simply copying the program to your hard disk. Create a folder on your hard disk to contain the Remote Controller program, the Prefs file and the Catalog file. Do not put the Prefs file into the System Folder.

### CONNECTION INSTRUCTIONS

Connect the MIDI interface into either serial port on the rear of the Macintosh. The Remote Controller needs to use both the MIDI In and MIDI Out of the EIIIIX to establish 2-way communication.



A MIDI interface which uses both serial ports of the Macintosh and has two MIDI inputs is preferable. With this arrangement, the EIIIIX can be simultaneously controlled from a MIDI keyboard and the Macintosh.

## SETUP

### POWER UP!

After you have completed the two-way MIDI connection between the Macintosh and the EIIIX, follow these instructions.

- 1) Turn the EIIIX on.
- 2) Check the EIIIX SCSI ID number (MASTER, Disk Utilities, 0) and write it down.
- 3) Turn on the Mac and start the Remote Controller program. An image of the EIIIX front panel should appear.
- 4) Open the MIDI function, located in the Controls menu, and match the device ID to your EIIIX's ID number (the one you wrote down in step two).
- 5) If proper communications have been established, the center display on the Remote Controller will show the EIIIX's main preset selection screen. If the center display on the Remote Controller remains blank, the Macintosh and the EIIIX are not communicating. Refer to the following chart.

*The Remote Controller program only supports a MHz MIDI interface speed.*

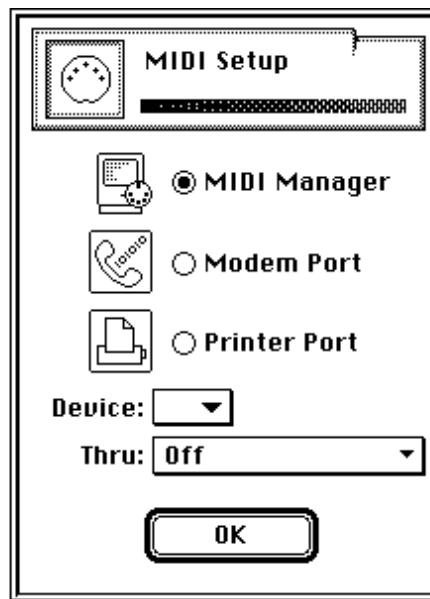
### EIIIX and Macintosh NOT Communicating

- 1) Check MIDI cables and interface.
- 2) Make sure that the EIIIX SCSI ID (MASTER/ GLOBALS, Disk Utilities, 0) and the Remote Controller IDs (Control Menu) both match.
- 3) Make sure that the MIDI port on the Remote Controller is set correctly.

## MIDI SETUP

The MIDI function, located in the Controls menu, allows you to select either the Printer or Modem port on the Macintosh, the Device ID number, and Merge to Opposite or Echo to Opposite port.

The Device ID is the same as the EIII X SCSI ID and should be set to the same number. In controlling multiple EIII X's, this number would be changed to the ID number of the EIII X you wish to control.



Selecting *Merge Opposite* sends the MIDI In from the *opposite* Mac serial port to the EIII X. This function is particularly useful when controlling an EIII X rack from an external MIDI keyboard.

Selecting *Echo Opposite* sends the MIDI Out from the EIII X and sends it to the *opposite* Mac serial port. This function was included to allow for a keyboard version of the EIII X. It has no purpose on a rack mounted EIII X.

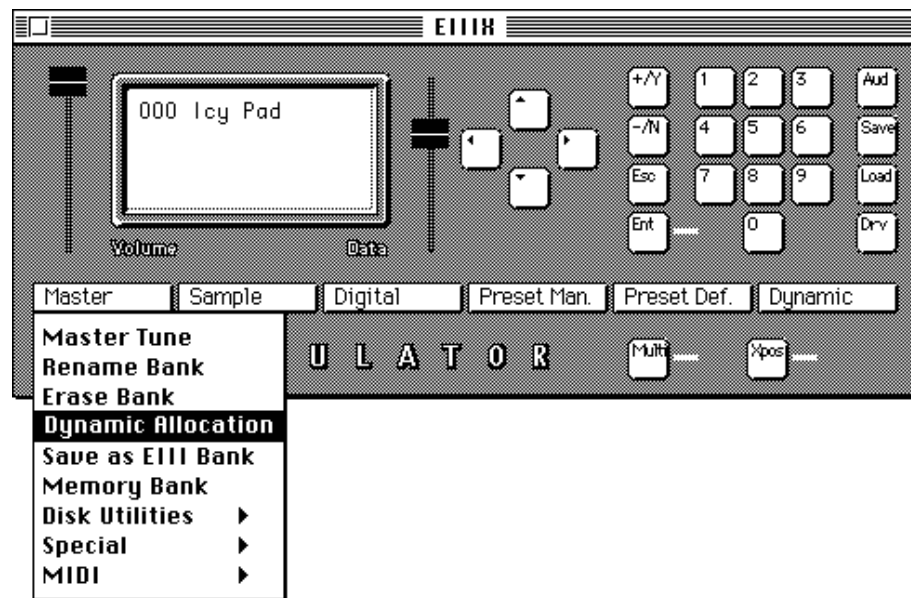
## REMOTE CONTROLLER

### THE REMOTE CONTROLLER BUTTONS

All buttons on the Remote Controller operate exactly like their EIII<sup>X</sup> counterparts. Additionally the Module buttons are pop up menus, also organized like the EIII<sup>X</sup>. You can access any function without having to first *get into the module*, like you do on the EIII<sup>X</sup>.

The *Escape* button allows you to “back out” of a module function to the previous screen.

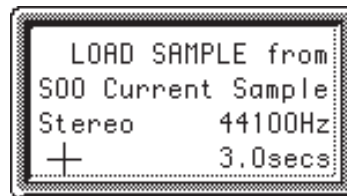
- **Clicking** on any field in the LCD display moves the cursor to that field.



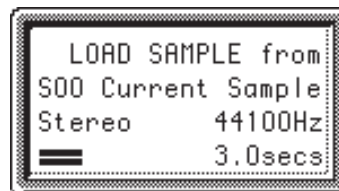
## REMOTE CONTROLLER

■ **Click and Hold** (about half a second) to edit the field with the mouse. This can be accomplished in one of two ways. Choose the method you prefer from the Preferences... Dialog in the Control Menu.

● **Inc/Dec:** The cursor will change to a cross. Moving the cursor up will increment the value and moving the cursor down will decrement the value. The distance from the center determines the rate of change.



● **Data Slider:** The cursor will change to a slider knob, allowing data entry akin to the EIIIIX slider. This method is fast, but has the disadvantage of jumping to the current value of the slider, while the Inc/Dec method moves smoothly up or down.

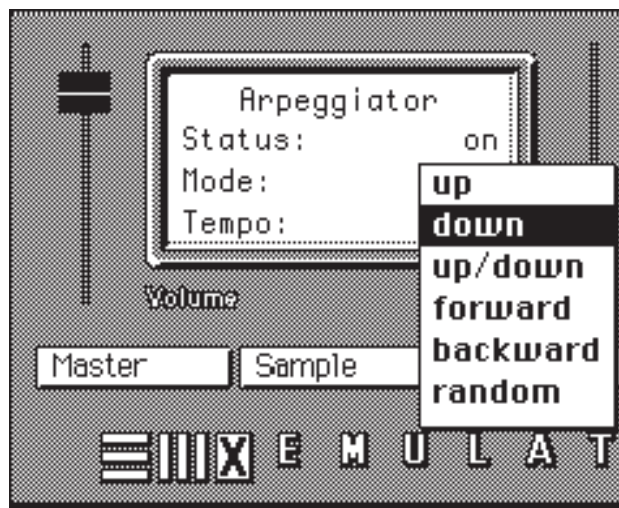


■ A popup data slider will appear when you click anywhere on the panel where there isn't a button.



## REMOTE CONTROLLER

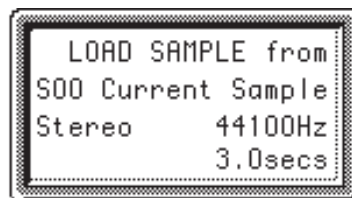
- **Double-Clicking** on any field will reveal a popup menu of selections appropriate to the field (you must hold the mouse button while the little watch cursor is displayed).



The popup menu will only display the first 36 choices, so it is best used on fields with a small number of choices such as the list of LFO waveforms.

- **Hidden Feature...** Clicking once just slightly to the left of the display bezel brings up a dialog box that allows you to make a selection from a list. The hidden function only works whenever the cursor is on a bank, preset or sample field.

Click between  
the Bezel and  
the Slider.



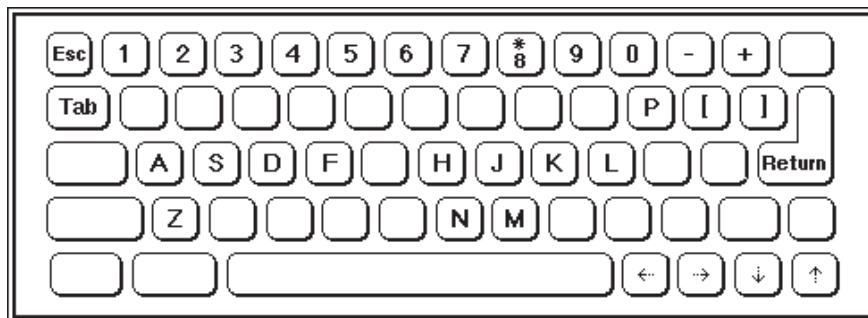
## REMOTE CONTROLLER

■ **Renaming:** Any time you get to a rename screen, you may do so using the Macintosh keyboard. This is a much faster method than either the EIIIX keyboard or the data slider. The backspace key will backspace and the up/down cursor keys allow you to insert and delete spaces exactly as they do on the EIIIX.

### USING THE MACINTOSH KEYBOARD

Every function on the EIIIX can be accessed directly from the Macintosh keyboard. Modules are selected by keying the appropriate key.

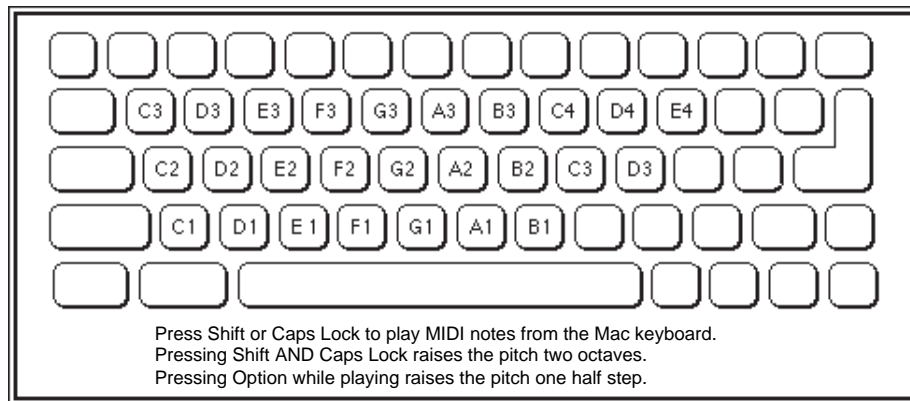
esc..... Escape	Tab ..... Drive Select
* ..... Load Bank	A ..... Dynamic Processing
[ ..... Save	S ..... Sample Management
] ..... Load	D ..... Digital Processing
+ or Y ..... Inc/Yes	F ..... Preset Definition
- or N ..... Dec/No	M ..... Master/Globals
← ↑ → ↓ .... Cursor Buttons	P ..... Preset Management
H,J,K,L ..... Cursor Buttons	Z ..... Toggles Multi Mode
Return ..... Enter	



## REMOTE CONTROLLER

### PLAYING THE EIII X FROM THE MAC KEYBOARD

- Pressing Shift or Caps Lock on the Macintosh keyboard turns the Mac keyboard into a two note polyphonic MIDI keyboard.
- Pressing Shift AND Caps Lock raises the pitch two octaves.
- Pressing the Option key while playing raises the pitch one half step.
- The EIII X function keys which are not on letters will operate normally.



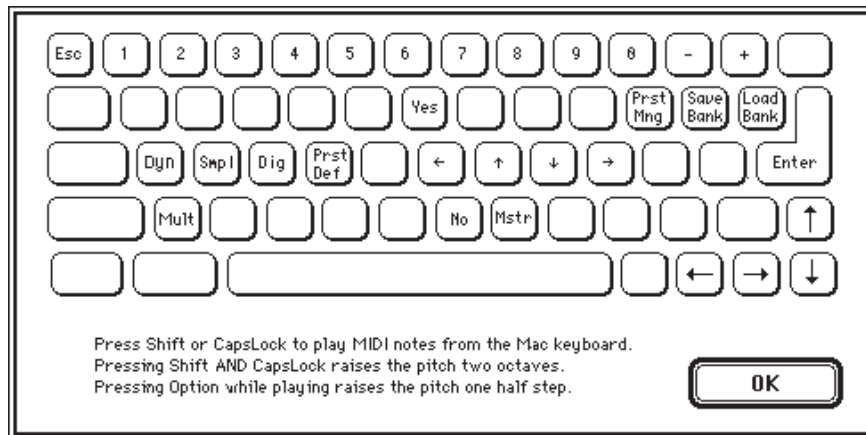
▼ If this function does not seem to be working, make sure you have a preset assigned to channel 1. The Mac keyboard transmits on MIDI channel 1 only.

## MENU ITEMS

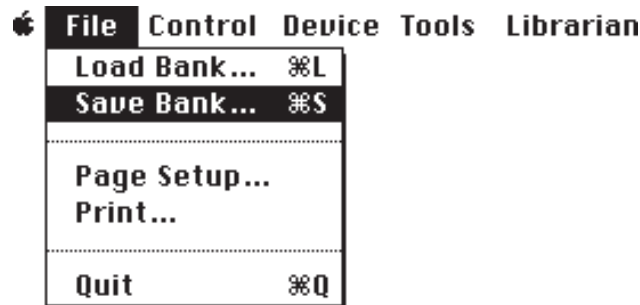
### File Controls Device Tools Librarian

#### THE HELP SCREEN

All the keyboard functions are shown on the Help Screen, which is located under “About the EIII Front Panel” at the top of the menu. The key assignments are mnemonic where possible, grouped by location where not. The ten key pad always works. For Mac 512 users, the cursor keys may be operated from the h, j, k, and l keys where h=left, j=up, k=down, l=right. The escape key operates the escape button on the EIII panel.



## FILE MENU



### ■ Load Bank

Allows you to load a bank from any storage media.

### ■ Save Bank

Allows you to save a bank to any writable media.

### ■ Page Setup

This is the standard page setup which allows you to select paper size, margins, orientation, etc.

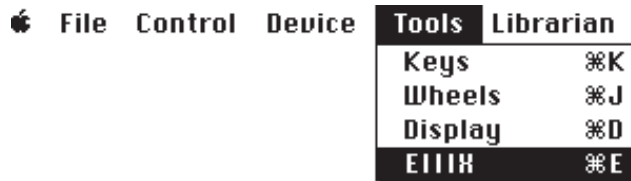
### ■ Print

You may print out any of your library volumes. If you wish to reformat the listing, you may open a volume with your favorite word processor (which reads TEXT files) and change anything you wish. However, DO NOT save the file under the same name or the Librarian will not be able to read it again. Use the *Save As* function to save under a different name, or better yet, COPY the volume first, before making any changes. See the Librarian section for more information on library volumes.

### ■ Quit

Quits the program.

## TOOLS MENU



### ■ Keys

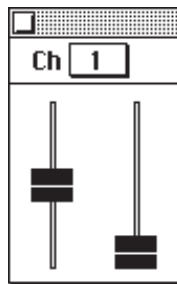
Selecting *Keys* calls up a little MIDI keyboard which can be played by clicking with the mouse. The keyboard allows you to select the MIDI channel on which it will transmit, and can be transposed one or two octaves up or down.



■ *Selecting Keys, Wheels, or Display using the control key (⌘K, ⌘J, ⌘D, ⌘E) will bring the selected item to the front.*

### ■ Wheels

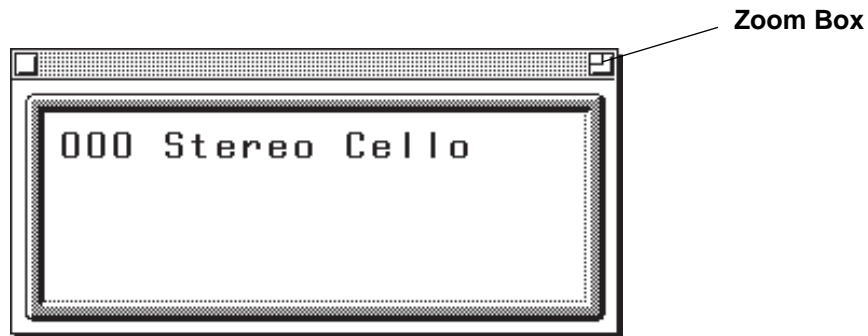
Selecting *Wheels* brings up a pair of MIDI control wheels simulating the wheels on a MIDI keyboard. The left wheel is spring loaded and returns to center, and the right wheel stays where you set it. The MIDI channel for the control wheels may be changed independently of the keyboard MIDI channel.



## TOOLS MENU

### ■ Display

Selecting *Display* calls up a larger version of the LCD for easier reading.



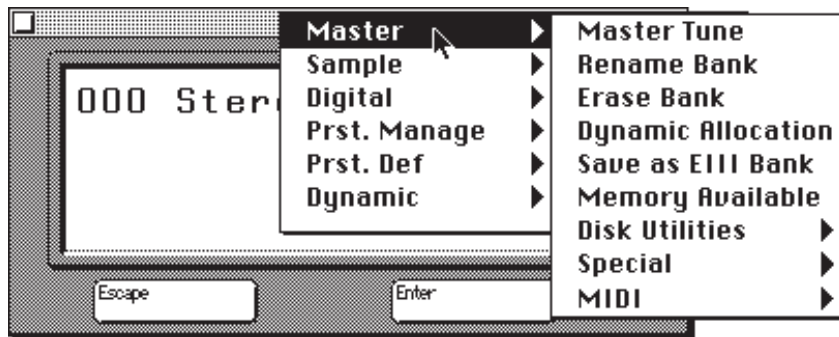
Selecting the Zoom Box enlarges the display to include Escape, Enter, Yes, No buttons and a Module Select button.



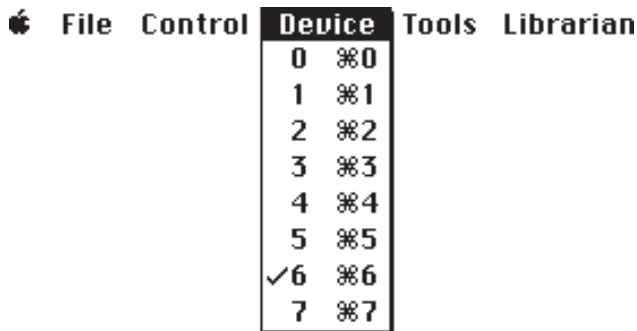
## TOOLS MENU

### ■ Module Select Button

Selecting the *Modules* button, allows access to any EIIIX module directly from the display screen. Operating the Remote Controller from the display screen may be preferable if your Macintosh screen is cluttered with other applications.



## DEVICE MENU



The device menu allows you to select the EIIIX you wish to remote control by selecting its SCSI ID. In this way multiple EIIIX's can be controlled. This screen is functionally identical to the device selection option in the MIDI menu.



## CONTROL MENU



### ■ MIDI

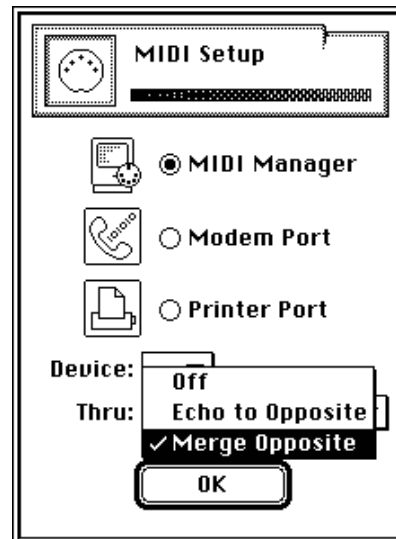
Selecting MIDI brings up the MIDI Dialog box described in the connection instructions.

The MIDI functions allow you to select which serial port is used for the EIII interface, the ID number of the EIII you wish to address, and to turn the Merge function on or off.

If *MIDI Manager* is selected, the Remote Controller will appear as an icon in the MIDI Manager patch screen. The input and output connections must both be routed for the remote controller to work.

The *Merge Opposite* function routes an alternate MIDI controller through the opposite serial port to the one selected, and merges the controller data with the data coming from the Macintosh. See the diagram in the Setup section.

The *Echo Opposite* function routes MIDI data originating from the EIII out through the opposite serial port so that the EIII could control another external MIDI device. (Note: This function was included to provide for the possibility of a keyboard version of the EIII. It has no function on a rack model.)



## **CONTROL MENU**

### **■ Macro Functions** **Begin Macro Control** **End Macro Control** **Wait For EIIX**

A Macro program is a sequencer that allows you to record a series of keystrokes and then play them back on command, thus relieving the user of entering repetitious keystrokes.

#### **TO RECORD A MACRO**

- Start Macro program recording.
- Select *Begin Macro Control*.
- Begin recording keystrokes. (Select *Wait For EIIX* if necessary.)
- Select *End Macro Control*.

Certain functions on the EIIX are rather time intensive. Suppose you wanted to load a set of samples from another sampler using the MIDI Sample Dump function. This process could take quite some time as you would have to: select each sample, wait for the sample dump to finish, and then start the process over for the next sample. You would be spending most of your time waiting!

By entering the EIIX keystrokes into a macro, you would be able to set up the EIIX <-> Mac team to perform all the conversion functions and you would be free to leave, letting the machines do the work.

To use the Macro functions, you will need to have a macro program such as MacroMaker™ QuickKeys™, or Tempo™. These Macro programs are commonly available at most computer or software outlets. Other macro programs will probably work as well.

## CONTROL MENU

● To record an EIIIIX macro, first start your macro program recording. As the **FIRST** step in your EIIIIX macro, select *Begin Macro Control* from the Control menu. Then, begin recording the EIIIIX keystrokes using the remote controller. If you are performing a function that requires the EIIIIX to perform time intensive calculations (i.e. MIDI Sample Dump), select *Wait For EIIIIX* from the control menu. The *Wait For EIIIIX* function tells the Mac to wait for the EIIIIX to send some MIDI data back before moving on to the next function.

When the EIIIIX has completed the operation, finish your macro and then **MAKE SURE** to select *End Macro Control* at the end of your macro. If *Begin Macro Control* is left on, then the remote controller will operate very sluggishly in its normal operations. If the *Wait For EIIIIX* function is selected by accident, press any key to cancel.

### ■ Create a Macro

As an example, we'll create a macro to normalize the gain. Another macro will repeat the normalize macro as many times as you like. In this example we'll use MacroMaker™ from the Apple Utilities.

### Normalize Macro

This macro will automatically normalize a sample (or increase the gain of the sample to full level). *Note: This macro only works for groups of **mono** samples. If there is a stereo sample in the group, the macro will crash. To use the macro for stereo samples, insert another "Enter" after step 5.*

1. Select the Digital Processing module.
2. Start MacroMaker recording.
3. Begin Macro Control from the Control menu.
4. Select Digital Processing, 8 - *Gain Change*.
5. Press Enter.
6. Select Wait For EIIIIX from the Control menu.
7. Press Enter.

## **CONTROL MENU**

8. Select Wait For EIIIX from the Control menu.
7. Press 0 - *Select Sample*.
9. Increment the sample number using the + button and press Enter.
10. Select End Macro Control from the Control menu.
11. Stop MacroMaker recording. Call this Macro "Normalize".

### **Loop the Macro**

This macro will loop the Normalize macro on three successive samples.

1. Create a new macro on the Mac which consists of three "Control N's" in succession. Call this macro "Loop".
2. Go back to your Normalize macro and key it with a Control N.
3. Select the first sample you want to normalize, then run your "Loop" macro.

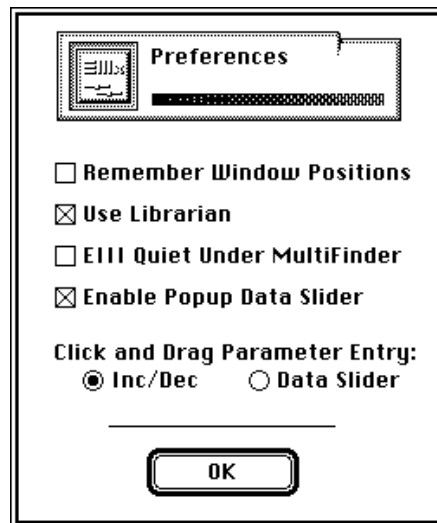
This is a simple example which shows the power of having your EIIIX under Macintosh control. Whenever you are doing repetitive tasks on the EIIIX, think about whether or not you could use a macro to make your job easier.

## CONTROL MENU

### ■ Preferences

Selecting *Preferences* calls up the following functions.

- *Remember Window Positions*: remembers the position of the windows upon quitting and restores them when the program is again run.
- *Use Librarian*: enables or disables the Librarian portion of the program. Disable the Librarian if you don't use it.
- *ElIIX Quiet Under Multifinder*: prevents the ElIIX from sending System Exclusive data when the Remote Controller is not in use. This prevents undesirable interactions with other MIDI devices (i.e., sequencers trying to record the SysEx MIDI data).
- *Enable Popup Data Slider*: enables or disables the little popup slider that appears whenever you click anywhere on the panel where there isn't a button.
- *Click and Drag Parameter Entry*: allows you to select either a data slider or increment/decrement type of data entry when changing parameter values.



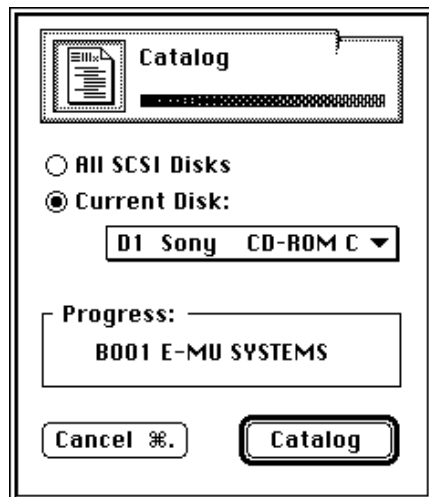
## THE LIBRARIAN

Librarian	
Find ...	⌘F
Browse ...	⌘B
Catalog ...	⌘H
SCSI Network ...	

▼ *Library Volumes MUST be kept in the same folder as the Remote Controller program or the program will not be able to find them.*

The Librarian allows you to track your entire EIIIX library, including removable media. It does this by *Cataloging* the contents of each EIIIX disk and storing the information in a TEXT file on your Macintosh disk. This EIIIX disk/text file combination is referred to as a *Volume*. Each EIIIX disk (or each platter of removable media) is one volume. All the Volumes are collectively known as the *Library*.

By keeping the Library contents on the Macintosh disk, very fast searches can be accomplished. Even sounds residing on off-line removable media can be found using this method. In addition, the contents of each volume can be printed, allowing a hardcopy listing of your entire sound library.



### Cataloging

The Librarian learns the contents of each volume through a process known as *Cataloging*. The EIIIX disk is scanned, and the contents are listed to the Mac disk. This cataloging function takes anywhere from 3 to 10 minutes, depending on how many items are on the disk. This is typically done once for each disk, when first setting up your library system. After that, the Librarian does the volume updates when banks are saved.

*Each disk is identified by the name of the first bank on the disk (B00).*

## LIBRARIAN

### BEFORE YOU USE THE LIBRARIAN

- 1) SET UP THE SCSI NETWORK
- 2) CATALOG YOUR DISK LIBRARY

#### SCSI Network

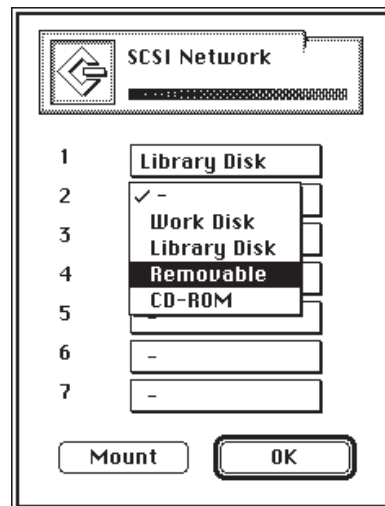
Use unique first bank names for each disk and avoid changing this name. The Librarian needs to know a little bit about the EIII SCSI network. SCSI devices can be one of four types:

- Work Disk ----- Ignored by the Librarian
- Library Disk ----- Fixed Hard Disk tracked by the Librarian
- Removable Media -- Removable Media tracked by the Librarian
- CD ROM ----- Non-writeable Removable Media tracked by the Librarian

Setting up the SCSI Network is easy. Simply identify each of your SCSI devices as one of the four types of disks. The librarian won't let you label an ID number with no drive connected to the SCSI bus. Mount the drives whenever you have added or deleted devices on the SCSI bus.

#### IMPORTANT

The Librarian only records changes to your library when you use the Remote Controller to save. If you make changes to your library without using the Remote Controller, you will have to re-catalog before using the Librarian again.



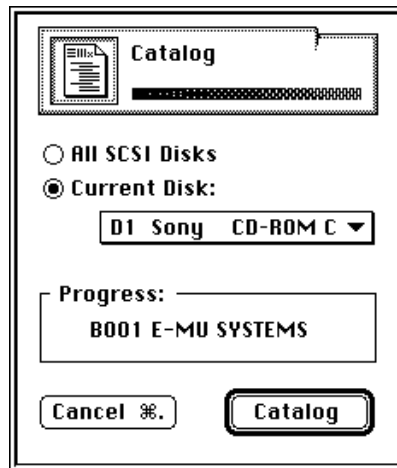
## LIBRARIAN

### CATALOG

The Librarian updates the appropriate Volume Catalog any time a bank is saved to a Library or Removable Media disk. This typically adds about 20 seconds to the save time. Volumes must be kept in the same folder with the Remote Controller program.

If you are saving frequently during a session, or use one disk as a scratch disk, you can designate the disk as a work disk and the Librarian will not keep track, thus saving time. After the session, you can switch the disk back to a Library disk and then save the bank to update the Library, or you can re-catalog the entire volume.

The *Catalog* function in the File menu, catalogs an entire volume. Sequencer songs and segments are optionally cataloged. You **MUST** catalog a disk before the Librarian can do a fast search of it!



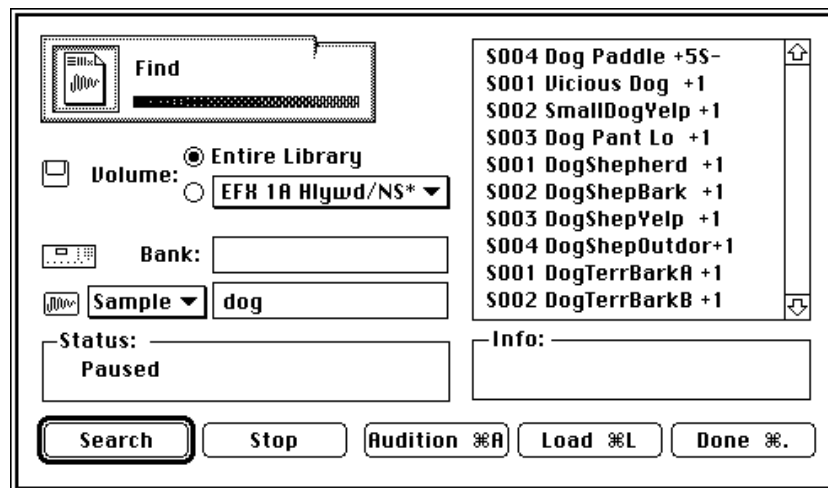
Cataloging your disks creates a TEXT file which can be quickly searched in order to find a particular sample, preset, song or segment. Searching a TEXT file is *much* faster than looking through every hard disk bank on the SCSI bus.



## LIBRARIAN

### FIND

You may *Find* and *Load* presets and samples. These items are called *Members*. Specify a pattern to match in the member name, and if desired, a pattern to match in the bank name. Including the bank name makes the search much faster.



Selecting *Search* searches the TEXT file on the Macintosh disk and selecting *Search Current Disk* searches the file on the current disk. Try to include a bank name when searching the current disk as this will speed up the process considerably.

- Select Members to load by clicking on them with the mouse.
- Shift-click to select multiple members.
- Double-click or click the *Load* button to load the members into the EIIIX.
- The audition button reads samples directly from the hard disk!

If the Volume containing the desired members to be loaded is not currently on-line, the Librarian will prompt you to insert the proper disk.

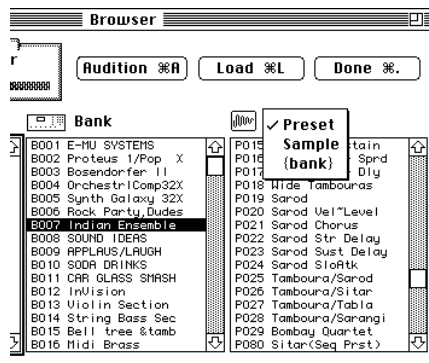
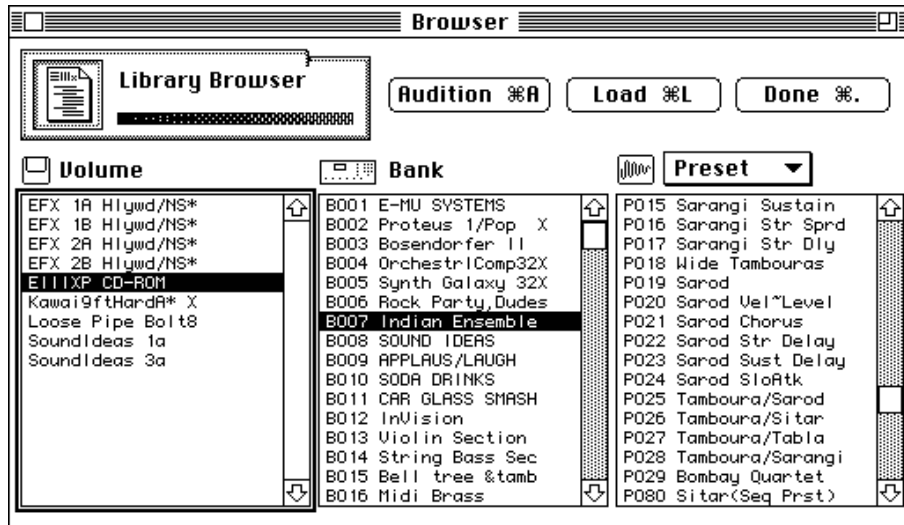
■ *Organize your sample names so they can be easily found using the Librarian.*

■ *When loading a bank from the Find menu, you have the option to either overwrite or merge the bank with the currently loaded bank.*

## LIBRARIAN

### BROWSER

This function allows you to browse through all your SCSI devices for banks, presets or samples. The Library Browser makes it easy to navigate around in your sound collection because you always know in exactly which disk and bank a member is located. Presets, samples and banks can also be loaded directly into the EIIIIX bank from this screen. The audition button lets you audition samples directly off the hard disk.



Clicking on the box directly above the rightmost menu allows you to select the contents of the menu below. The bank load function has been included for added convenience.

If the disk containing the selected member is not currently on-line when you select Load, the Volume Finder screen will appear and prompt you to insert the required disk.

## LIBRARIAN

- Each disk in the Browser is identified by the name of the first bank on the disk (B00).
- The Browser lists the disk drives in alphabetical order.
- When loading a bank from the Find menu, you have the option to either overwrite or merge the bank with the currently loaded bank.
- The arrow keys on the keyboard may be used to navigate around the Browser screen. In addition, you can simply type in a name to select it.

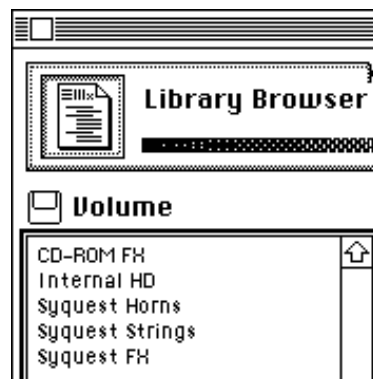
■ *Remember to rename bank 00 and then re-catalog, after using the Backup/Restore function.*

The Browser name may be different than the name of the disk as labeled in Master/Globals Menu, Disk Utilities, 2 (Rename Disk Bank). The Browser uses the name of Bank 00 as the disk name in order to accommodate removable media.

### PLAN AHEAD!

*Before you catalog your sound library, try to organize your collection so it can be more easily managed.*

- Create a dummy Bank 00 on all your drives and removable media platters. Give Bank 00 a name that will help you to identify the drive.
- Use a common first character in the name of Bank 00 on all removable media that is associated with a particular drive. For example, "Syquest FX", "Syquest Strings", etc. Now all the Syquest platters will be listed together in the Browser, instead of being scattered.



## **LIBRARIAN**

### **PRINT A VOLUME**

You may print out any of your library volumes. If you wish to reformat the listing, you may open a volume with your favorite word processor (which reads TEXT files) and change anything you wish. However, DO NOT save the file under the same name or the Librarian will **not** be able to read it again. Use the *Save As* function to save under a different name, or better yet, COPY the volume first, before making any changes.

## INDEX

### A

audition sample 25-26

### B

bank 00 name 27

browser 26-27

### C

cataloging 22, 24

CD ROM 23

connection instructions 4-5

### D

data slider 8

device ID 6, 16

display, large LCD 15

double clicking 9

### E

echo opposite 6, 17

### F

find file 25

front panel 7-11

### H

help screen 12

hidden feature 9

### I

increment/decrement 8

installation 4

introduction 1

### K

keyboard operation 10-12

### L

librarian 22-28

librarian overview 22-23

library disk 23

load bank 13

load, presets, samples, etc.  
26

### M

macro functions 18-20

members 25

merge bank 25, 27

merge opposite 6, 17

MIDI interface speed 5

MIDI keyboard 14

MIDI port selection 6, 17

MIDI setup 6

module selection 7, 16

module select button 16

### N

naming 10

naming disks 27

### O

operation, basic 7-12

### P

page setup 13

port selection 6, 17

preferences 21

print 13, 28

problems 5

### Q

quit 13

### R

removable media 23, 27

renaming 10

## **INDEX**

### **S**

save bank 13  
SCSI ID # 6, 16  
SCSI network 22-23  
setup 3-6

### **T**

tools menu 14-16

### **V**

volumes 22-28

### **W**

wait for EIIIX 18-20  
wheels, control 14  
work disk 23

### **Z**

zoom box 15

**E-MU SYSTEMS WARRANTY REGISTRATION**  
.....  
**EMULATOR IIIX REMOTE CONTROLLER/LIBRARIAN**  
.....

Please take the time right now to fill out and mail in this warranty registration card. By doing so, you are assured of receiving news of all updates, product bulletins, and manual revisions. Thank you.

**Your Name:** \_\_\_\_\_  
**Address:** \_\_\_\_\_

**EIIIX Serial Number:** \_\_\_\_\_ **Date Purchased:** \_\_\_\_\_  
We would appreciate the answers to the following questions.

**Where did you first learn about the EIIIX?** \_\_\_\_\_

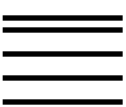
**What led you to choose the EIIIX?** \_\_\_\_\_

**How much memory is in your EIIIX?** \_\_\_\_\_

**What other features would you like to see incorporated into the EIIIX?** \_\_\_\_\_

**What other products would you like to see marketed by E-mu Systems?** \_\_\_\_\_

**Additional Comments:** \_\_\_\_\_

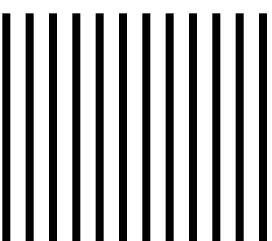


NO POSTAGE  
NECESSARY IF  
MAILED IN THE  
UNITED STATES

**BUSINESS REPLY MAIL**

FIRST CLASS PERMIT NO. 209 SANTA CRUZ, CA

POSTAGE WILL BE PAID BY ADDRESSEE



**E-mu Systems, Inc.**

1600 GREEN HILLS ROAD

P.O. BOX 660015

SCOTTS VALLEY, CA 95067-0015

